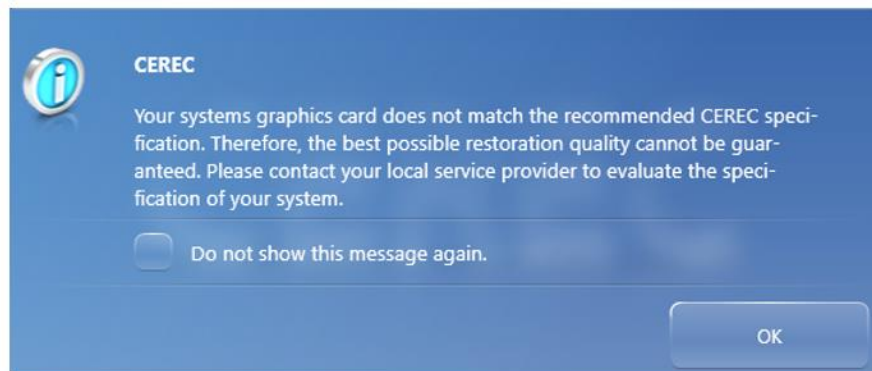


CEREC SW 4.5.2 Graphic Card Driver

To ensure your CEREC system's best performance when working with the CEREC SW 4.5.2, it is important that the correct graphic card driver is installed on the PC. The latest drivers provided by the graphic card manufacturers can lead to performance issues with the CEREC SW. The valid drivers for NVIDIA and AMD graphic cards can therefore be downloaded at my.cerec.com. The graphic card drivers are different for NVIDIA and AMD. The matching driver is selected as follows:

1. Launch the CEREC SW 4.5.2
2. If you receive following message during the start of CEREC SW 4.5.2 you will need to update your graphic card's driver. If the message does not appear, it is still recommendable to install the new driver.



3. Click "OK".
4. Click on the **CEREC icon** on the upper right side of the start screen and extend the splash screen by pulling on the arrow at the right side.



5. You can identify your graphic card and its drivers in the column "GPU(s)":
 - a. If you have an **NVIDIA** graphic card, the "GPU(s)" column will end with "**v23.21.13.8813**".
 - b. If you have an **AMD** graphic card, the "GPU(s)" column will end with "**v22.19.162.4**".
6. If your graphic card's version does not match with our requirement, please download the version of your graphic card's driver which matches the manufacturer at my.cerec.com/en/cerec-sw.html in the category graphic card.
7. Launch the downloaded driver setup and run through the setup.
8. Restart your AC.
9. If the message reappears please contact your responsible service provider for assistance.